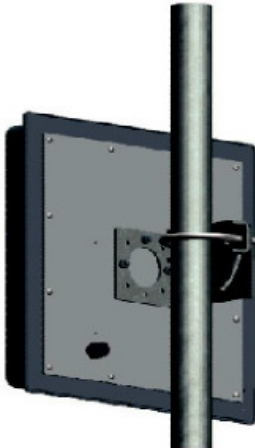




AWSPE24 Panel Enclosure Antenna

19 dBi

The AWSPE2419 Panel Enclosure Antenna is an excellent solution for all 2.4 GHz applications. Not only does its patented circuit design offer high gain for a low cost, but the low profile and rugged design make it the ideal antenna for outdoor applications. The AWSPE2419 features a weather-tight compartment behind the antenna to allow the direct integration of electronics, and also meets NEMA 4 requirements. Included with the AWSPE2419 panel enclosure antenna is also a high-strength mounting bracket.

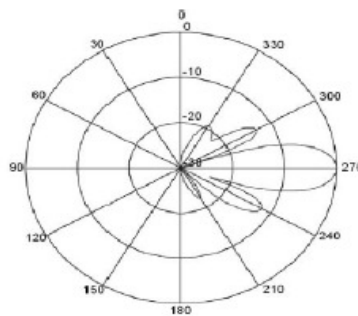


APPLICATIONS

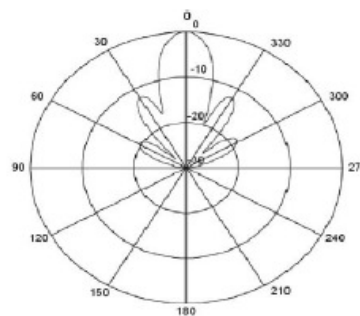
2.4GHz Wireless LAN Applications
802.11b/g Applications
Client Antennas
OEM Wireless Data
PTP or PTMP Applications
Wireless Bridging

SPECIFICATIONS

Weight 4 lb (1.36 kg)
Outer Dimensions 15.4 x 15.4 x 2 in. (391 x 391 x 51 mm)
Compartment Dimensions 11.75 x 11.75 x 1 in. (298 x 298 x 25 mm)
Backplane aluminium
Radome UV stabilized ABS plastic
Antenna Frequency Range 2.4 - 2.5 GHz
Gain 19dBi
Beamwidth 18 degrees VPOL / 18 degrees HPOL
VSWR 1.5:1
Front to Back Ratio >30 dB
Cross Polarization >30 dB
Power Rating 30 watts
Impedance 50 Ohms
Lightning Protection DC ground
Connector Type Integral SMA jack
Wind Survivability 125 mph (201 kmph)
Wind Load 1.90ft² (0.18m²)
Operating Temperature Range -49°F to +149°F (-45°C to +65°C)
Pole Mount Diameter Range 0.75 in to 2.0 in (19mm to 76mm)



AWSPE2419 E Plane



AWSPE2419 H Plane