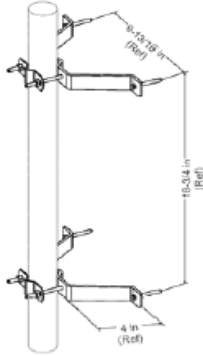


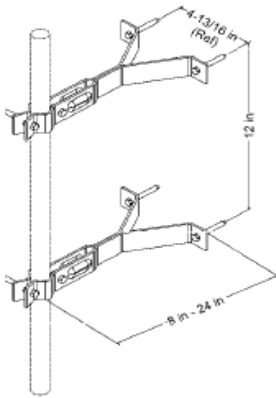
## Roof-Top Applications

### Wall Mount Brackets



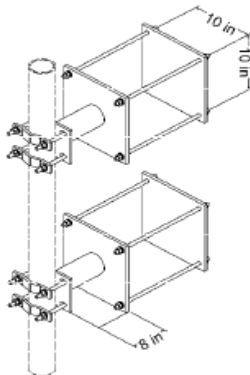
<b>Material</b>	Pre-galv. Clamps	<b>Design:</b>	Knee brace
<b>Included:</b>	and hardware incl. lag bolts		included on 12" and larger
<b>Order</b>	Mast pipes up to	<b>Mounts to:</b>	n/a
<b>Seperately:</b>	1-3/4" OD		

Part #	Description	Weight (Lbs)
AWS643	Double Wall Mount Kit, 4" Wide, Fits 1" O.D. to 2" O.D. Mast	2.1



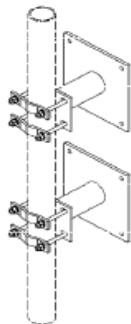
Part #	Description	Weight (Lbs)
AWS850	Double Wall Mount Kit, 8" - Standard, Fits 1.25" O.D. to 1.75" O.D. Mast	0.8
AWS024	Double Wall Mount Kit, 12" - Standard, Fits 1.25" O.D. to 1.75" O.D. Mast	4.0
AWS367	Double Wall Mount Kit, 18" - Standard, Fits 1.25" O.D. to 1.75" O.D. Mast	6.0
AWS026	Double Wall Mount Kit, 24" - Standard, Fits 1.25" O.D. to 1.75" O.D. Mast	7.0

### Pole Wall Mount



<b>Material</b>	Two hot dip galvanized brackets and hardware	<b>Design:</b>	Welded dual level brackets, 4 bolt pattern.
<b>Order</b>	Wall anchors for	<b>Mounts to:</b>	Hollow or solid w all
<b>Seperately:</b>	solid w alls		

Part #	Description	Weight (Lbs)
AWS483	Heavy Duty Wall Mount Brackets for Hollow Walls. 1-1/2" to 4-1/2" OD. Kit of 2.	112.0



Part #	Description	Weight (Lbs)
AWS484	Heavy Duty Wall Mount Brackets for Solid Walls. 1-1/2" to 4-1/2" OD. Kit of 2.	64.0